

New Affordable Thru Coolant for **YOUR** Driven Tools

REGO-FIX®

reThink
reRoute
reCool®

- Improve Productivity
- Reduce cycle times
- Extend Tool life



Made in
Switzerland 

reCool®
Coolant Supply

Revolutionising Driven Tooling

reCool[®] Rotary Coolant Supply System

- For using ER-collets in driven tools with metric external thread (ISO 15488/DIN 6944)
- Speeds up to 6,000 rpm*
- Coolant pressures up to 20 bar / 290 PSI*
- Maintenance free coolant lubricated bearings
- For coolant through tools (with DS sealing discs) and for peripheral cooling (with KS flush discs)

Convert your
Driven Tools to
thru coolant in
MINUTES

INTERNAL COOLING WITH reCool[®] offers you real benefits:



BEFORE:

- Limited adjustment of the nozzles or spray tubes with different tool length and diameters
- Lower tool life since coolant is not led directly to the cutting edge
- Scattering losses of the spray jet
- Bad chip removal



AFTER:

Coolant Supply with reCool[®]

- + Utilize your existing driven tooling
- + Simple and cost effective
- + Maintenance free
- + Increase your feeds, speeds and depths of cut
- + Reduce your cycle times
- + Increase tool life
- + More effective swarf removal.



Swiss
Precision
Tools

In Stock - Order Today!



reCool® Rotary Coolant Supply System – Set RCR/ER

A wide range of options available including:

- RCR/ER16
- RCR/ER20
- RCR/ER25
- RCR/ER32
- RCR/ER40

The set includes



Coolant pipe with protector Ø 6 mm, 400 mm length

reCool® clamping nut with outer ring

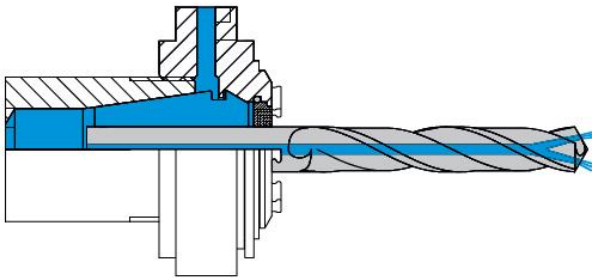
1/8" BSP straight push-in fitting

1/8" BSP 90° elbow push-in fitting

Delivered across the UK in 48 hours

reCool® Optional Accessories

For THRU Coolant Operation



REGO-FIX® Sealing Discs DS/ER

| Type | Sealing capacity [mm] |
|----------|-----------------------|
| DS/ER 16 | 2.50 - 10.00 |
| DS/ER 20 | 2.50 - 13.00 |
| DS/ER 25 | 2.50 - 16.00 |
| DS/ER 32 | 2.50 - 20.00 |
| DS/ER 40 | 2.50 - 26.00 |

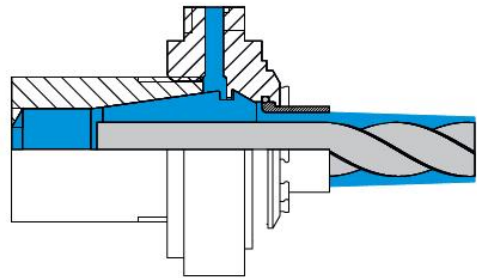
Aluminium Ring Adapters 1/8" BSP

| Type | Part No. |
|--------------------|------------|
| RRA 10 / Ø 10.0 mm | 3799.94100 |
| RRA 11 / Ø 11.0 mm | 3799.94110 |
| RRA 12 / Ø 12.0 mm | 3799.94120 |
| RRA 13 / Ø 13.0 mm | 3799.94130 |
| RRA 14 / Ø 14.0 mm | 3799.94140 |
| RRA 15 / Ø 15.0 mm | 3799.94150 |
| RRA 16 / Ø 16.0 mm | 3799.94160 |

Spanner

| Type | Part No. |
|---------|------------|
| E 16 AX | 7117.16000 |
| E 20 AX | 7117.20000 |
| E 25 AX | 7117.25000 |
| E 32 AX | 7117.32000 |
| E 40 AX | 7117.40000 |

For Coolant Pheripheral operation



REGO-FIX® Coolant Flush Discs KS/ER

| Type | Clamp. capacity [mm] |
|----------|----------------------|
| KS/ER 16 | 3.00 - 10.00 |
| KS/ER 20 | 3.00 - 13.00 |
| KS/ER 25 | 3.00 - 16.00 |
| KS/ER 32 | 3.00 - 20.00 |

Ball Adapters 1/8" BSP

| Type | Part No. |
|--------------------|------------|
| RBA 10 / Ø 10.0 mm | 3799.93100 |
| RBA 11 / Ø 11.0 mm | 3799.93110 |
| RBA 12 / Ø 12.0 mm | 3799.93120 |
| RBA 13 / Ø 13.0 mm | 3799.93130 |
| RBA 14 / Ø 14.0 mm | 3799.93140 |
| RBA 15 / Ø 15.0 mm | 3799.93150 |
| RBA 16 / Ø 16.0 mm | 3799.93160 |

Fitting 90° Elbow

| Type | Part No. |
|--------------------|------------|
| SET RVG 1/8" - 90° | 3799.92189 |

Fittings Straight

| Type | Part No. |
|---------------------|------------|
| SET RVG M8 x 1 - 0° | 3799.92810 |
| SET RVG 1/8" - 0° | 3799.92180 |

REPAIRS & SERVICING

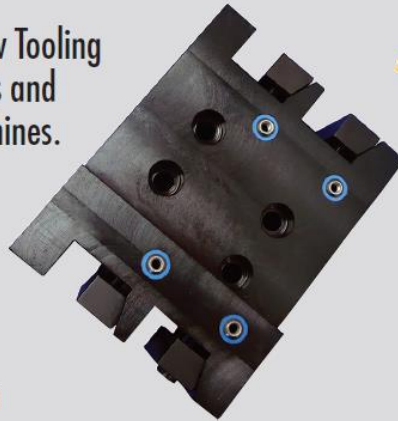
We repair & service all makes and models of Driven & Static Tooling. Our unique services are used nationally & internationally, this comprehensive service includes the following:

- + Tools disassembled
- + All components are checked
- + All parts are chemically cleaned
- + Quotation Formulated & sent to customer
- + Tools are rebuilt using KLUBER NBU15 GREASE, various Loctite Products & Top Quality precision bearings & seals
- + Replacement parts manufactured in house
- + Collet taper reground if necessary
- + Tool checked for alignment & corrected if required
- + Every tool is individually marked for traceability
- + Service schedule created & sent to customer with periodic health checks

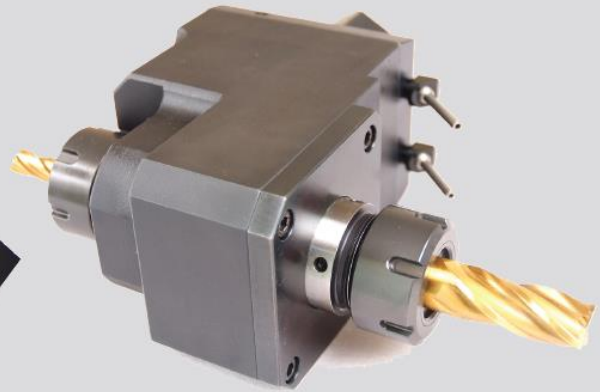
We can also visit by appointment to assess your service needs.

NEW TOOLING

DPGE offer New Tooling for most makes and models of machines.



Miyano Quad Holder



Mazak Double Ended Driven Tool

SPECIALS

DPGE will design and Manufacture bespoke Tooling for special applications.



Citizen Adjustable Tool Platten



Star 5 Spindle Driven Tool